



Digital Keypsets on Mitel 3300

10/27/2011

Americas Headquarters

OAISYS

7965 South Priest Drive, Suite 105

Tempe, AZ 85284

USA

www.oaisys.com

(480) 496-9040



OVERVIEW

OAISYS Tracer supports recording digital keysets on the Mitel 3300 with MiTAI via the NGX board(s).

An AudioCodes RTS Box is required while using the SmartWorks NGX board to tap a Mitel 3300.

One RTS Box will support two NGX boards.

In order to maintain the integrity of the D channel, the RTS Box takes two ports on the NGX board to make one useful port.

Example: A customer who wants to record 12 digital keysets would need to use one 24 port NGX board.

NOTE: OAISYS can support up to a maximum of 96 digital stations per Tracer box.

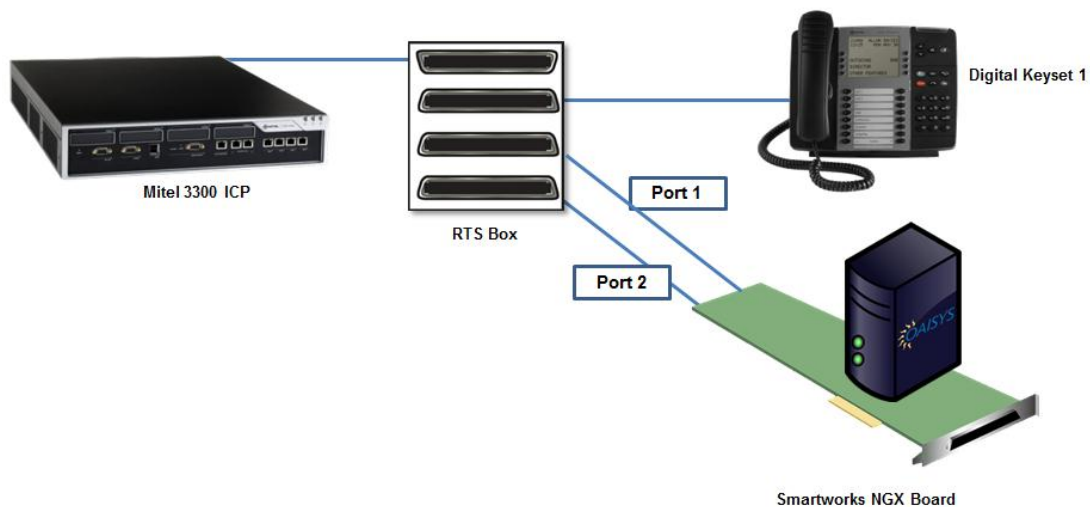
REQUIREMENTS FOR NGX BOARD ON MITEL 3300

- Mitel 3300 (release 7.1 minimum)
- Mitel MiTAI (version 3 minimum)
- NGX Board (available in 8, 16, and 24 ports)
- RTS Box (Rev E or greater)
- Mitel Required License per port
- OAISYS Tracer (version 5.5 minimum)

INSTALLING THE RTS BOX

The RTS is designed with four RJ 21X connectors; one male and three female.

The male connector interfaces the RTS to the network PBX while one female connector is used to interface with the phones. The other connectors interface with the NGX boards. The following diagram illustrates this configuration.



For more information on the installation procedure per AudioCodes, please visit:
[Http://www.audiocodes.com/Data/Uploads/Proper_Installation_of_the_RTS_Box_AN.pdf](http://www.audiocodes.com/Data/Uploads/Proper_Installation_of_the_RTS_Box_AN.pdf)